

# KAGO-ENTLE ENGINEERING & TRADING

— Precision. Performance. Reliability. —

Delivering high-quality mechanical and engineering solutions designed to meet the most demanding industrial challenges.

Experienced

Fast Turnaround

Quality

Client-Centered

Mining

Construction

Agriculture

Manufacturing

Municipal

# Kago-Entle Engineering & Trading

Welcome to Kago-Entle Engineering and Trading, a specialist in delivering high-quality mechanical and engineering solutions designed to meet the most demanding industrial challenges. Our operations are built on the core values of **Precision**, **Performance**, and **Reliability**.

## Precision

Delivering exact solutions that meet your specifications.

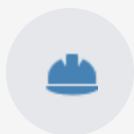
## Performance

Optimizing efficiency and productivity for your operations.

## Reliability

Guaranteeing long-lasting results and operational continuity.

## Target Industries



Mining



Construction



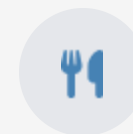
Agriculture



Manufacturing



Municipal



Food Manufacturing



**Market Insight:** The global hydraulic cylinder repair service market was valued at \$1.5 billion in 2024 and is projected to reach \$2.8 billion by 2033.

# Kago-Entle Engineering & Trading

## Core Services (Part 1)



### Cylinder Repairs

We specialize in restoring hydraulic and pneumatic cylinders to their original equipment manufacturer (OEM) standards.

**Key benefit:** Advanced machining and sealing technologies ensure peak performance, minimizing fluid leaks and maintaining pressure integrity.



### Line Boring

Our line boring services, available both on-site and in-house, repair worn or damaged bores on heavy machinery.

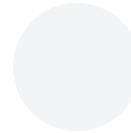
**Key benefit:** Precision repair minimizes equipment downtime and maximizes operational efficiency by restoring components to exact specifications.



### Fabrication & Platework

Kago-Entle provides custom metalwork solutions, ranging from structural steel to complex plate fabrication.

**Key benefit:** Our experienced team delivers durable, high-quality solutions meticulously crafted to meet specific project requirements and withstand rigorous industrial environments.



### Conveyor Structures

We design, fabricate, and install robust conveyor systems and drives tailored to diverse operational needs.

**Key benefit:** Solutions support everything from light-duty material handling to heavy industrial applications, ensuring smooth and efficient transport of goods.



**Market Insight:** The global hydraulic cylinder repair service market was valued at \$1.5 billion in 2024 and is projected to reach \$2.8 billion by 2033.

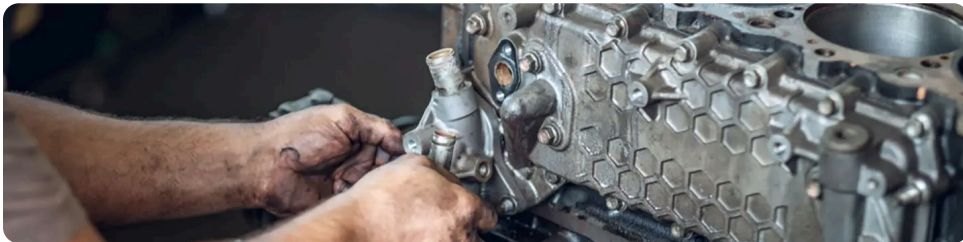
# Kago-Entle Engineering & Trading

## Core Services (Part 2)



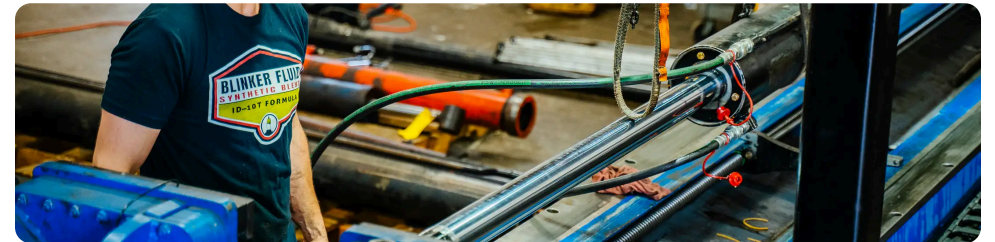
### Engine Rebuilds

Our technicians are experts in rebuilding both diesel and petrol engines, from minor overhauls to complete rebuilds.



### Hydraulic System Repairs

Comprehensive diagnosis and repair for hydraulic systems with focus on rapid turnaround times.



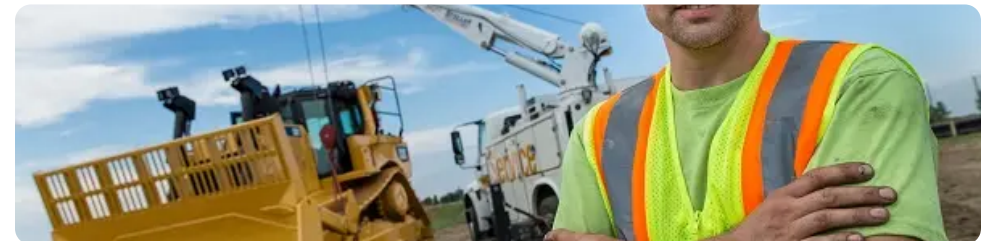
### Pump Maintenance

Expert repair and maintenance for slurry and water pumps, preventing cavitation and extending lifespan.



### Field Services

Our mobile team delivers technical expertise directly to your site, minimizing downtime in remote settings.



**Key Benefit:** Kago-Entle's specialized services ensure optimal performance and longevity for your critical industrial equipment.

## Why Choose Kago-Entle?



### Experienced Team

Our team comprises highly skilled technicians and engineers who bring years of hands-on expertise to every project. This extensive experience ensures that all solutions are knowledgeable, effective, and precisely executed.



### Fast Turnaround

Understanding that downtime directly impacts productivity and profitability, Kago-Entle prioritizes quick and efficient service. Our commitment to fast turnaround times minimizes operational interruptions, keeping client operations running smoothly.



### Quality Assurance

Every service and product delivered by Kago-Entle adheres to the highest standards of quality. We utilize top-tier materials and state-of-the-art tools, guaranteeing the reliability and longevity of our solutions.



### Client-Centered Approach

Kago-Entle fosters a collaborative partnership with clients, working closely to understand their unique challenges and objectives. This approach ensures the delivery of customized solutions that precisely meet specific needs and budgetary requirements.



"Kago-Entle Engineering & Trading - Delivering 卓越 value through expertise, efficiency, and exceptional service."

# Kago-Entle Engineering & Trading

## Industries We Serve



### Mining

Supporting heavy-duty equipment with specialized services for continuous operation in harsh environments.

Cylinder Repairs

Line Boring

Pump Maintenance



### Construction

Comprehensive services for construction machinery, minimizing downtime and extending equipment lifespan.

Engine Rebuilds

Hydraulic Repairs

Field Services



### Agriculture

Maintenance and repair solutions for farming equipment, ensuring peak performance for efficient operations.

Fabrication

Conveyor Systems



### Manufacturing

Custom fabrication and platework, along with maintenance of conveyor systems and hydraulic repairs.

Custom Metalwork

Conveyor Drives



### Municipal & Utility

Expertise in pump maintenance and general mechanical repairs for essential infrastructure.

Pump Maintenance

Mechanical Repairs



### Food Manufacturing

Specialized engineering solutions for food processing equipment with precision and quality focus.

Specialized Solutions

Food-Grade Materials



**Market Insight:** The global hydraulic cylinder repair service market, vital for mining operations, was valued at \$1.5 billion in 2024 and projected to reach \$2.8 billion by 2033.

# Kago-Entle Engineering & Trading

For reliable engineering and mechanical solutions tailored to your specific needs, we invite you to connect with Kago-Entle Engineering and Trading.

Contact us today for a consultation or to request a quote and discover how our expertise can benefit your operations.



## Consultation

Speak with one of our engineering experts to discuss your specific challenges and requirements.



## Request a Quote

Get a personalized quote for our services tailored to your specific needs and budget.



## Technical Support

Connect with our technical team for immediate assistance with your engineering challenges.

## Contact Us Today



Whether you need expert consultation, a competitive quote, or technical support, our team is always ready to help. [Contact Kago-Entle Engineering & Trading](#) to discover how our expertise can benefit your operations.

Don't wait to optimize your operations with our engineering expertise!